

CHRM3 Antibody (C-Term)
Purified Rabbit Polyclonal Antibody (Pab)
Catalog # AP22122b**Specification**

CHRM3 Antibody (C-Term) - Product Information

Application	WB,E
Primary Accession	P20309
Other Accession	Q9N2A3 , Q9N2A4
Reactivity	Human
Host	Rabbit
Clonality	polyclonal
Isotype	Rabbit IgG
Calculated MW	66128
Antigen Region	382-416

CHRM3 Antibody (C-Term) - Additional Information**Gene ID** 1131**Other Names**

Muscarinic acetylcholine receptor M3, CHRM3

Target/Specificity

This CHRM3 antibody is generated from a rabbit immunized with a KLH conjugated synthetic peptide between 382-416 amino acids from human CHRM3.

Dilution

WB~~1:2000

E~~Use at an assay dependent concentration.

Format

Purified polyclonal antibody supplied in PBS with 0.09% (W/V) sodium azide. This antibody is purified through a protein A column, followed by peptide affinity purification.

Storage

Maintain refrigerated at 2-8°C for up to 2 weeks. For long term storage store at -20°C in small aliquots to prevent freeze-thaw cycles.

Precautions

CHRM3 Antibody (C-Term) is for research use only and not for use in diagnostic or therapeutic procedures.

CHRM3 Antibody (C-Term) - Protein Information**Name** CHRM3**Function** The muscarinic acetylcholine receptor mediates various cellular responses, including

inhibition of adenylate cyclase, breakdown of phosphoinositides and modulation of potassium channels through the action of G proteins. Primary transducing effect is Pi turnover.

Cellular Location

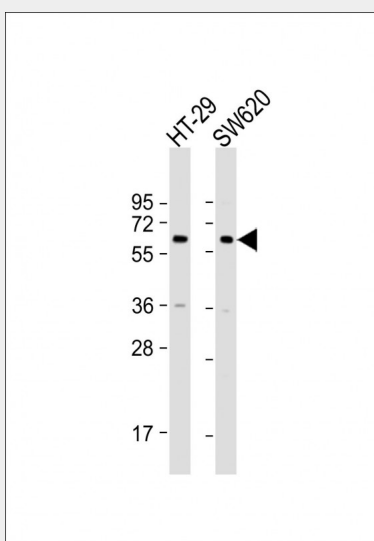
Cell membrane; Multi-pass membrane protein. Postsynaptic cell membrane; Multi-pass membrane protein. Basolateral cell membrane; Multi-pass membrane protein. Endoplasmic reticulum membrane; Multi-pass membrane protein. Note=Colocalizes with TMEM147 in the endoplasmic reticulum (ER) membrane. TMEM147 impairs its trafficking to the cell membrane leading to its retention in the ER membrane

CHRM3 Antibody (C-Term) - Protocols

Provided below are standard protocols that you may find useful for product applications.

- [Western Blot](#)
- [Blocking Peptides](#)
- [Dot Blot](#)
- [Immunohistochemistry](#)
- [Immunofluorescence](#)
- [Immunoprecipitation](#)
- [Flow Cytometry](#)
- [Cell Culture](#)

CHRM3 Antibody (C-Term) - Images



All lanes : Anti-CHRM3 Antibody (C-Term) at 1:2000 dilution Lane 1: HT-29 whole cell lysate Lane 2: SW620 whole cell lysate Lysates/proteins at 20 µg per lane. Secondary Goat Anti-Rabbit IgG, (H+L), Peroxidase conjugated at 1/10000 dilution. Predicted band size : 66 kDa Blocking/Dilution buffer: 5% NFDm/TBST.

CHRM3 Antibody (C-Term) - Background

The muscarinic acetylcholine receptor mediates various cellular responses, including inhibition of adenylate cyclase, breakdown of phosphoinositides and modulation of potassium channels through the action of G proteins. Primary transducing effect is Pi turnover.

CHRM3 Antibody (C-Term) - References

Peralta E.G.,et al.EMBO J. 6:3923-3929(1987).
Bonner T.I.,et al.Neuron 1:403-410(1988).
Kitano T.,et al.Mol. Biol. Evol. 21:936-944(2004).
Puhl H.L. III,et al.Submitted (APR-2002) to the EMBL/GenBank/DDBJ databases.
Gregory S.G.,et al.Nature 441:315-321(2006).